



Mec 4

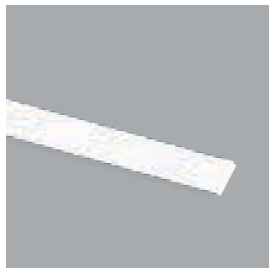
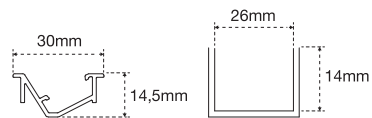


Anodised aluminium profile
Recessed installation
Transparent or opal polycarbonate diffuser
Symmetrical emission
Anodised aluminium finish



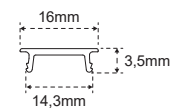
PROFILES

| | | |
|---|-------------|-----|
|  | 19800480300 | 3 m |
|  | 19800481200 | 3 m |





DIFFUSERS

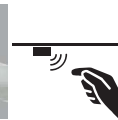
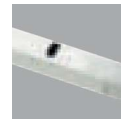
| | |
|---------------------|-----|
| Opaline 19700120100 | 3 m |
| Transp. 19700120000 | 3 m |



FIXING KIT

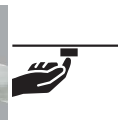
| | |
|---|-------------|
|  | 13201280300 |
|  | 13201280000 |

12 - 24 V SENSORS



IRS SENSOR

Mono: 12807550001
EDC: 12808870001



TOUCH SENSOR

12807510001



PIR SENSOR

12807570001

ELECTRIFICATION AND CONTROL



STRIP REEL 10 mm

For the choice of Strip Reel go to page 118.



CONNECTION CORDS

Connection from lamp to ballast, includes two springs to join the pieces without soldering.

3 m - 12 V: 12603960000
3 m - 24 V: 12603920000



MEC DRIVER

See page 262 for the choice of power supply system.