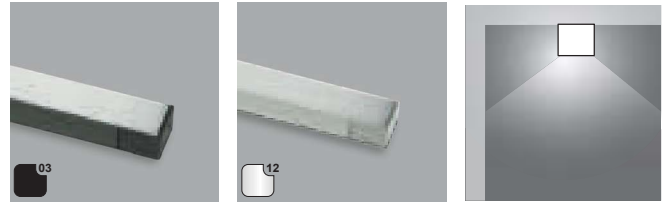




Micro Mec 1

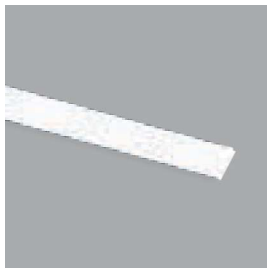
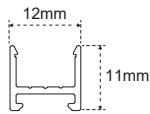


Anodised aluminium profile
 Surface installation
 Transparent or opal polycarbonate diffuser
 Symmetrical emission
 Anodised or black painted aluminium finish



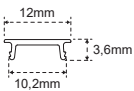
PROFILES

	19800890300	3 m
	19800891200	3 m





DIFFUSERS

Opaline 19700760100	3 m
Transp. 19700760000	3 m



END CAPS

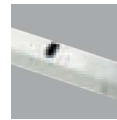
	13201660300	2 x
	13201661000	2 x



FIXING BRACKET

13201710000

12 - 24 V SENSORS



IRS SENSOR
 24201140000

ELECTRIFICATION AND CONTROL

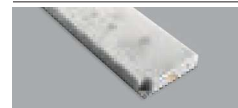


STRIP REEL 5 mm
 For the choice of Strip Reel go to page 119.



CONNECTION CORDS
 Connection from lamp to ballast, includes two springs to join the pieces without soldering.

3 m - 12 V: 12606220000
 3 m - 24 V: 12606230000



MEC DRIVER
 See page 262 for the choice of power supply system.