

Mec 1

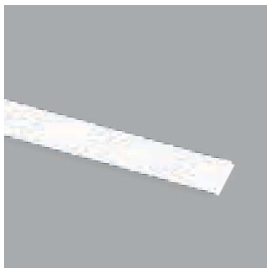
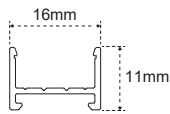


Anodised aluminium profile
 Surface installation
 Transparent or opal polycarbonate diffuser
 Symmetrical emission
 Anodised or black painted aluminium finish



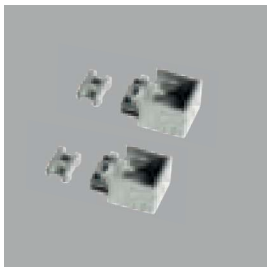
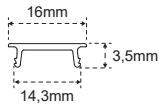
PROFILES

	19700280300	3 m
	19700281200	3 m



DIFFUSERS

Opaline 19700120100	3 m
Transp. 19700120000	3 m



END CAPS

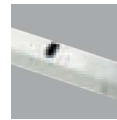
	13201080300	2 x
	13201080000	2 x



FIXING BRACKET

13201110000

12 - 24 V SENSORS



IRS SENSOR

Mono: 12807550001
 EDC: 12808870001



TOUCH SENSOR

12807510001



PIR SENSOR

12807530001

ELECTRIFICATION AND CONTROL



STRIP REEL 10 mm

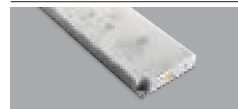
For the choice of Strip Reel go to page 118.



CONNECTION CORDS

Connection from lamp to ballast, includes two springs to join the pieces without soldering.

3 m - 12 V: 12603960000
 3 m - 24 V: 12603920000



MEC DRIVER

See page 262 for the choice of power supply system.