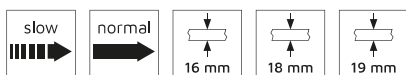


**Track set of Placard 74 of groove with clip systems, 2,35 m, White painted, Aluminium, 1 ut**

6307912



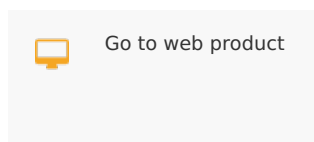
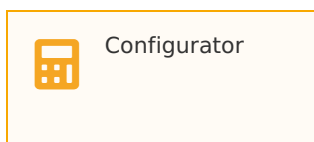
## Product Information



The Placard 74 channel set for Clip flush channel contains 1 upper 74 mm x 34 mm rail + 1 lower 74 mm x 6 mm flush rail + 3 clips. All this set belongs to the Placard 74 line and can be used with all the essential products of this model. Each component is made of sturdy aluminum with a white paint finish and the clip is made of strong plastic. This set of rails supports both the slow system and the normal system of trolleys and skids, and can also be used with 16 mm, 18 mm, and 19 mm boards. Its packaging contains 1 set of rails + clip.

SKU	6307912
Materials	Aluminium
Finishings	White painted
Packaging	1 Ut
Length	2,35 m

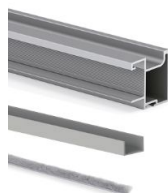
## Documentation



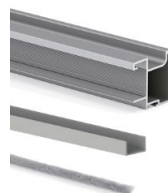
Essential Products



Handle profile set Style 16 for one sliding door, 2,35 m, White painted, Aluminium, 1 ut



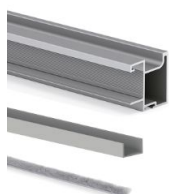
Handle profile set Sharp 16, 18 and 19 for one sliding door, 2,7 m, White painted, Aluminium, 1 ut



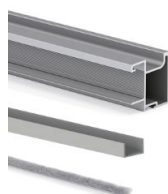
Handle profile set Sharp 16, 18 and 19 for one sliding door, 2,9 m, White painted, Aluminium, 1 ut



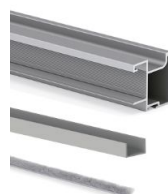
Handle profile set Sharp 16, 18 and 19 for one sliding door, 2,7 m, White painted, Aluminium, 1 ut



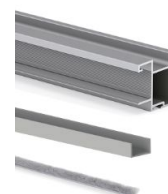
Handle profile set Sharp 16, 18 and 19 for one sliding door, 2,35 m, White painted, Aluminium, 1 ut



Handle profile set Sharp 16, 18 and 19 for one sliding door, 2,7 m, Black painted, Aluminium, 1 ut



Handle profile set Sharp 16, 18 and 19 for one sliding door, 2,9 m, Black painted, Aluminium, 1 ut



Handle profile set Sharp 16, 18 and 19 for one sliding door, 2,35 m, Black painted, Aluminium, 1 ut



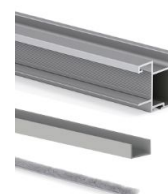
Handle profile set Sharp 16, 18 and 19 for one sliding door, 2,7 m, Black painted, Aluminium, 1 ut



Handle profile set Sharp 16, 18 and 19 for one sliding door, 2,7 m, Matt anodized, Aluminium, 1 ut



Handle profile set Sharp 16, 18 and 19 for one sliding door, 2,9 m, Matt anodized, Aluminium, 1 ut



Handle profile set Sharp 16, 18 and 19 for one sliding door, 2,7 m, Matt anodized, Aluminium, 1 ut



Handle profile set Wave 16 and 19 for one sliding door, 2,35 m, White painted, Aluminium, 1 ut



Handle profile set Wave 16 and 19 for one sliding door, 2,35 m, White painted, Aluminium, 1 ut



Handle profile set Wave 16 and 19 for one sliding door, 2,7 m, White painted, 1 ut



Handle profile set Wave 16 and 19 for one sliding door, 2,35 m, Matt anodized, Aluminium, 1 ut



Handle profile set Wave 16 and 19 for one sliding door, 2,7 m, Matt anodized, Aluminium, 1 ut



Handle profile set Wave 16 and 19 for one sliding door, 2,7 m, Matt anodized, 1 ut

## Imágenes

---