

CASTORS

RUOTE



emuca 

CASTORS RUOTE



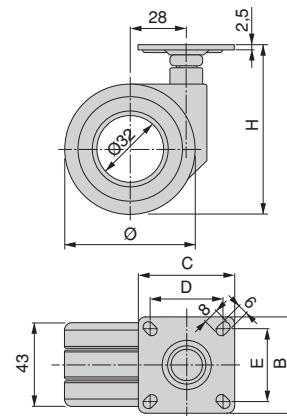
DECORATIVE CASTORS // RUOTE DECORATIVE

Hole castors kit with plate-mounted

Kit di ruote Hole con piastra per montaggio

Diametre Diametro	Load Portata	CxB	DxE	H	Finishing Finitura	Format Formato	Cod.
65	60 Kg	47x47	32x32	84	Black painted Verniciato nero	1 KIT/KIT	2041214

Plastic, Steel
Acciaio, Tecnoplastica



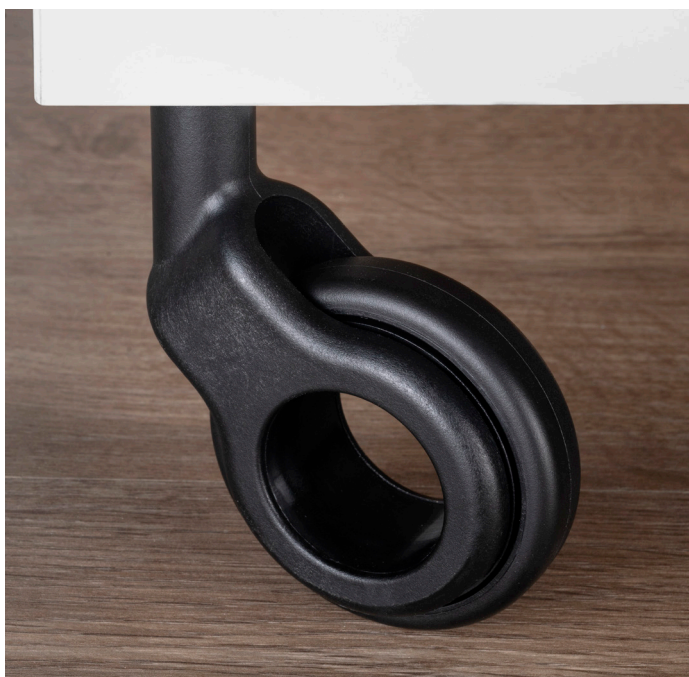
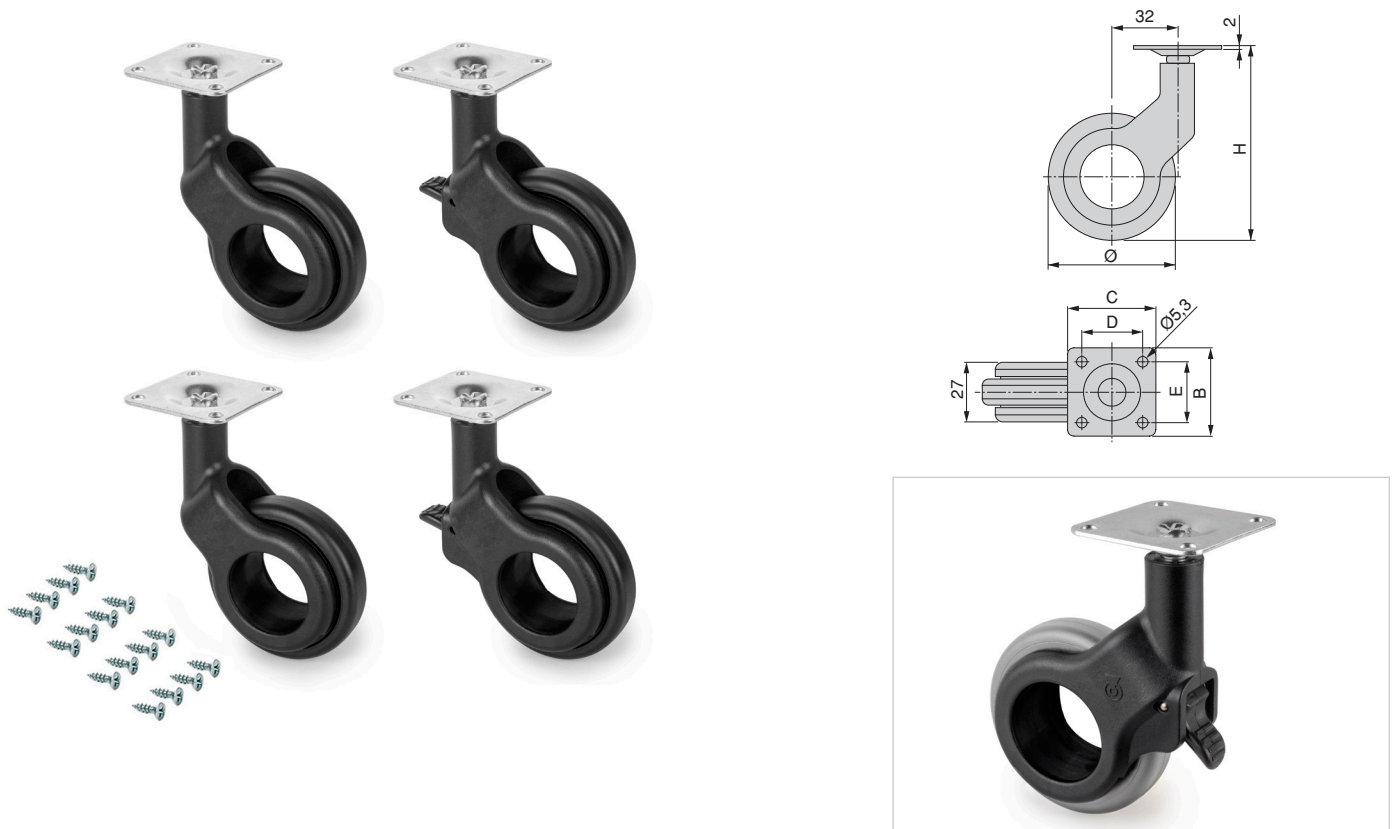
DECORATIVE CASTORS // RUOTE DECORATIVE

Hole 2 castors kit with plate-mounted

Kit di ruote Hole 2 con piastra per montaggio

Diametro Diametro	Load Portata	CxB	DxE	H	Finishing Finitura	Format Formato	Cod.
50	30 Kg	42x42	32x32	92,5	Black painted Verniciato nero	1 KIT/KIT	2041414
50	30 Kg	42x42	32x32	92,5	Grey plastic Plastica grigia	1 KIT/KIT	2041421


Plastic, Steel
Acciaio, Tecnoplastica



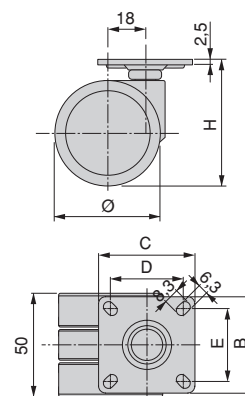
DECORATIVE CASTORS // RUOTE DECORATIVE

Bowl 2 castors kit with plate-mounted

Kit di ruote Bowl 2 con piastra per montaggio

Diametre Diametro	Load Portata	CxB	DxE	H	Finishing Finitura	Format Formato	Cod.
50	60 Kg	47x47	32,5x32,5	61,5	Transparent / not defined Transparente / non classificata		1 Ut/UN 2041320

Plastic, Steel
Acciaio, Tecnoplastica



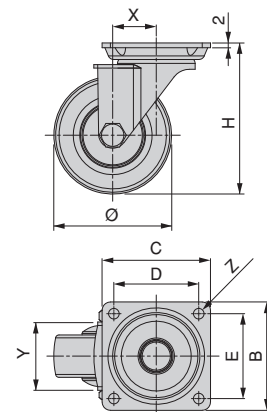
DECORATIVE CASTORS // RUOTE DECORATIVE

Slip 2 Red castors kit with plate-mounted

Kit di ruote Slip 2 con piastra per montaggio

Diametre Diametro	Load Portata	CxB	DxE	H	X	Y	Z	Finishing Finitura	Format Formato	Cod.
50	50 Kg	46x46	36x36	64	17,5	28,5	Ø4,5	Transparent / not defined Transparente / non classificata	1 KIT/KIT	2041020
75	70 Kg	60x60	45x45	97	28	33	6,5x8,5	Transparent / not defined Transparente / non classificata	1 KIT/KIT	2041120

Plastic, Steel
Acciaio, Tecnoplastica



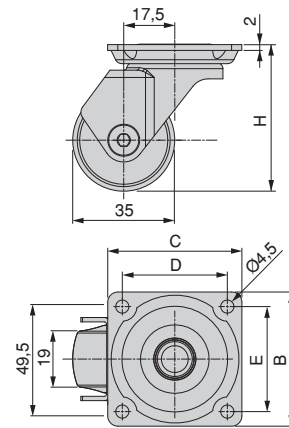
DECORATIVE CASTORS // RUOTE DECORATIVE

Slip 3 transparent castors kit with plate-mounted

Kit di ruote Slip 3 con piastra per montaggio

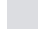
Diametre Diametro	Load Portata	CxB	DxE	H	Finishing Finitura	Format Formato	Cod.
35	40 kg	42x42	36x36	49,5	Transparent / not defined Trasparente / non classificata		1 KIT/KIT 2041520

Plastic, Steel
Acciaio, Tecnoplastica

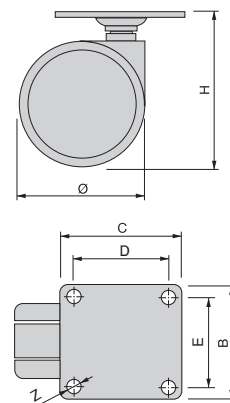


Bowl wheel kit with mounting plate

Kit di ruote Bowl con piastra di montaggio

Diametre Diametro	Load Portata	CxB	DxE	H	Z	Finishing Finitura	Format Formato	Cod.
50	50 Kg	42x42	32x32	73	5,3	Grey plastic Plastica grigia		1 KIT/KIT 2036421

Plastic, Steel
Acciaio, Tecnoplastica



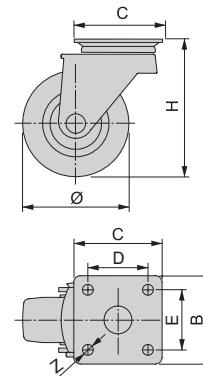
DECORATIVE CASTORS // RUOTE DECORATIVE

Slip wheel kit with mounting plate

Kit di ruote Slip con piastra di montaggio

Diametre Diámetro	Load Portata	CxB	DxE	H	Z	Finishing Finitura	Format Formato	Cod.
50	35 Kg	42x42	32x32	64	4,5	Grey plastic Plastica grigia	1 KIT/KIT	2036221
75	40 Kg	60x60	45x45	96	6,5x8,5	Grey plastic Plastica grigia	1 KIT/KIT	2036321

Plastic, Steel
Acciaio, Tecnoplastica

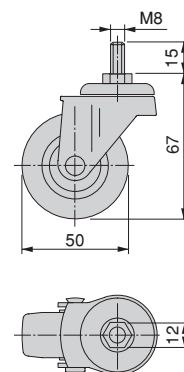


Slip wheel kit with bolt

Kit di ruote Slip con bullone

Diametre Diámetro	Load Portata	Model Modello	Finishing Finitura	Format Formato	Cod.
50	30 Kg	8x15 8x15	Grey plastic Plastica grigia	1 KIT/KIT	2037121

Plastic, Steel
Acciaio, Tecnoplastica



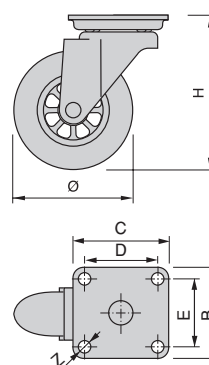
DECORATIVE CASTORS // RUOTE DECORATIVE

Slip Transparent wheel kit with mounting plate

Kit di ruote Slip trasparenti con piastra di montaggio

Diametre Diametro	Load Portata	CxB	DxE	H	Z	Finishing Finitura	Format Formato	Cod.
50	40 kg	42x42	32x32	63	4,5	Transparent / not defined Trasparente / non classificata		1 KIT/KIT 2036020
75	50 kg	60x60	45x45	98	6,3x8	Transparent / not defined Trasparente / non classificata		1 KIT/KIT 2036120

Plastic, Steel
Acciaio, Tecnoplastica

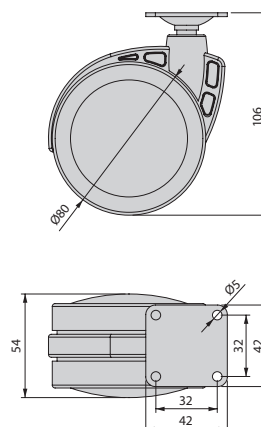


Mak wheel kit with mounting plate

Kit di ruote Mak con piastra di montaggio

Diametre Diametro	Load Portata	Finishing Finitura	Format Formato	Cod.
80	50 Kg	Grey plastic Plastica grigia	1 KIT/KIT	2037921

Plastic, Steel
Acciaio, Tecnoplastica



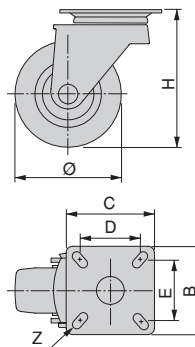
DECORATIVE CASTORS // RUOTE DECORATIVE

Black wheel kit with mounting plate

Kit di ruote Black di colore nero con piastra di montaggio

Diametre Diametro	CxB	DxE	H	Z	Finishing Finitura	Format Formato	Cod.
50	50x50	35x35	75	6,5x5,5	Black plastic Plastica nera	1 KIT/KIT	2008917
75	65x65	45x45	100	6x9	Black plastic Plastica nera	1 KIT/KIT	2009017

Plastic, Steel
Acciaio, Tecnoplastica

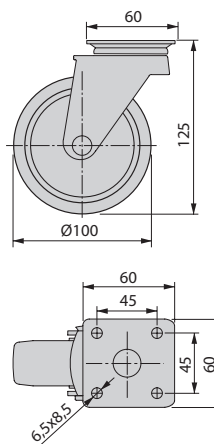


Slip 2 wheel kit with mounting plate

Kit di ruote Slip 2 con piastra di montaggio

Diametre Diametro	Load Portata	Finishing Finitura	Format Formato	Cod.
100	70 Kg	Grey plastic Plastica grigia	1 KIT/KIT	2003021

Plastic, Steel
Acciaio, Tecnoplastica



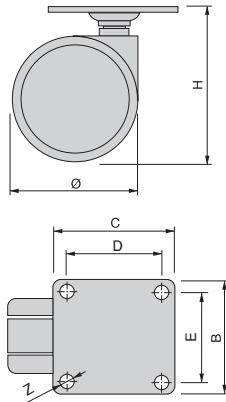
DECORATIVE CASTORS // RUOTE DECORATIVE

Bowl wheels with mounting plate

Ruote Bowl con piastra di montaggio

Description Descrizioni	Diametre Diametro	Load Portata	CxB	DxE	H	Z	Finishing Finitura	Format Formato	Cod.
without brake senza freno	50	50 Kg	42x42	32x32	73	5,3	Grey plastic Plastica grigia	100 Ut/UN	3160821
without brake senza freno	60	50 Kg	42x42	32x32	84	5,3	Grey plastic Plastica grigia	100 Ut/UN	3160621
with brake con freno	50	50 Kg	42x42	32x32	73	5,3	Grey plastic Plastica grigia	100 Ut/UN	3160921
with brake con freno	60	50 Kg	42x42	32x32	84	5,3	Grey plastic Plastica grigia	100 Ut/UN	3160721
with brake con freno	75	50 Kg	50x50	38x38	97	5	Grey plastic Plastica grigia	50 Ut/UN	3160521

Plastic, Steel
Acciaio, Tecnoplastica

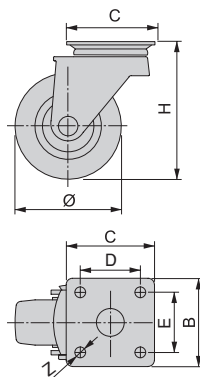


Slip castors grey-black with plate-mounted

Ruote Slip grigio-neri con piastra di montaggio

Description Descrizioni	Diametre Diametro	Load Portata	CxB	DxE	H	Z	Finishing Finitura	Format Formato	Cod.
without brake senza freno	50	35 Kg	42x42	32x32	64	4,5	Grey plastic Plastica grigia	125 Ut/UN	2002121
with brake con freno	50	35Kg	42x42	32x32	64	4,5	Grey plastic Plastica grigia	100 Ut/UN	2002221
without brake senza freno	75	40Kg	60x60	45x45	96	6,5x8,5	Grey plastic Plastica grigia	95 Ut/UN	2002321
with brake con freno	75	40 Kg	60x60	45x45	96	6,5x8,5	Grey plastic Plastica grigia	90 Ut/UN	2002421

Plastic, Steel
Acciaio, Tecnoplastica



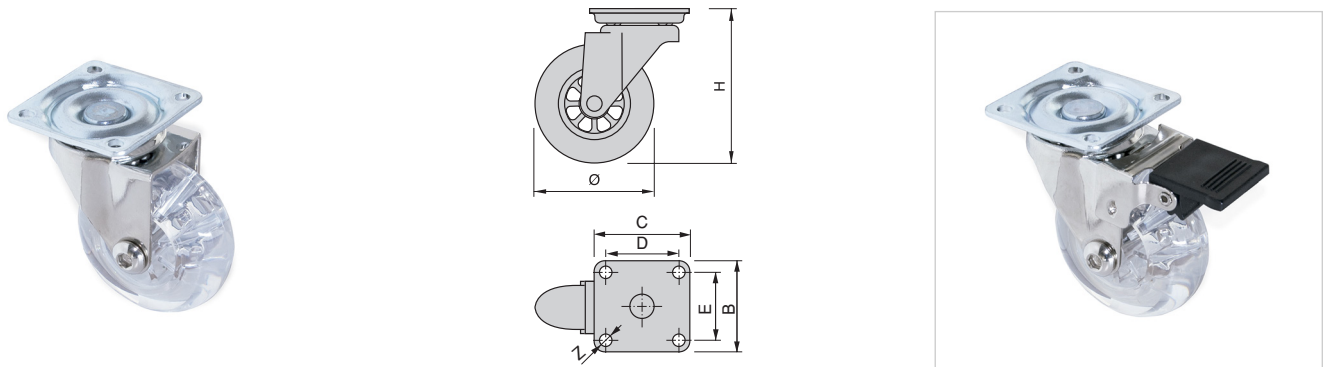
DECORATIVE CASTORS // RUOTE DECORATIVE

Slip Transparent wheels with mounting plate

Ruote Slip trasparenti con piastra di montaggio

Description Descrizioni	Diametre Diametro	Load Portata	CxB	DxE	H	Z	Finishing Finitura	Format Formato	Cod.	
without brake senza freno	50	40 Kg	42x42	32x32	63	4,5	Transparent / not defined Trasparente / non classificata	<input type="checkbox"/>	200 Ut/UN	3075620
with brake con freno	50	40 Kg	42x42	32x32	63	4,5	Transparent / not defined Trasparente / non classificata	<input type="checkbox"/>	200 Ut/UN	3075720
without brake senza freno	75	50 Kg	60x60	45x45	98	6,3x8	Transparent / not defined Trasparente / non classificata	<input type="checkbox"/>	80 Ut/UN	3075820
with brake con freno	75	50 Kg	60x60	45x45	98	6,3x8	Transparent / not defined Trasparente / non classificata	<input type="checkbox"/>	60 Ut/UN	3075920

Plastic, Steel
Acciaio, Tecnoplastica



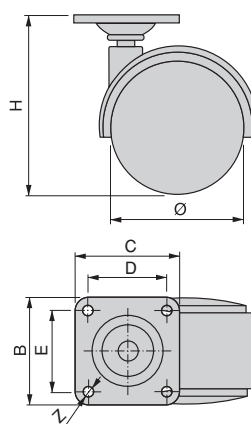
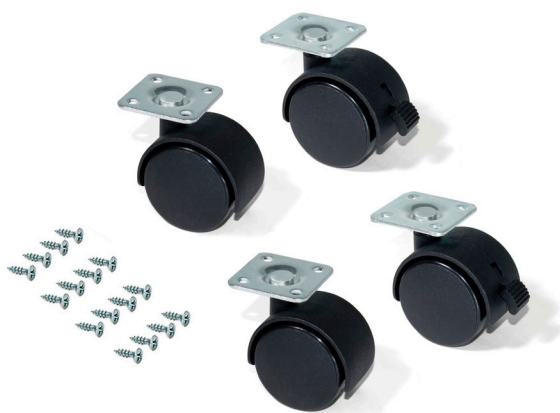
FUNCTIONAL CASTORS // RUOTE FUNZIONALI

Kit of castors for drawer units with plate

Kit di ruote per cassettiere con piastra

Description Descrizioni	Diametre Diametro	Load Portata	CxB	DxE	H	Z	Finishing Finitura	Format Formato	Cod.
4 without brake 4 senza freno	30	15 Kg	30x30	20x20	44	4,5	Black plastic Plastica nera	1 KIT/KIT	2036817
2 with brake + 2 without brake 2 con freno + 2 senza freno	40	25 Kg	38x38	25x25	55	5,5	Black plastic Plastica nera	1 KIT/KIT	2036717
2 with brake + 2 without brake 2 con freno + 2 senza freno	50	30 Kg	38x38	25x25	65	5,5	Black plastic Plastica nera	1 KIT/KIT	2036617

Plastic, Steel
Acciaio, Tecnoplastica

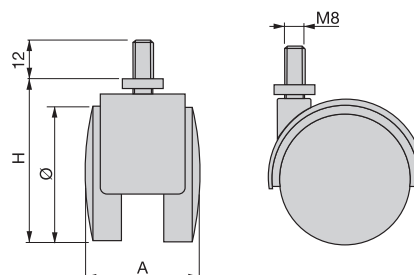


Kit of castors for drawer units with bolts

Kit di ruote per cassettiere con bullone

Description Descrizioni	Diametre Diametro	Load Portata	A	H	Finishing Finitura	Format Formato	Cod.
without brake senza freno	40	25 Kg	38	50	Black plastic Plastica nera	1 KIT/KIT	2037817

Plastic, Steel
Acciaio, Tecnoplastica



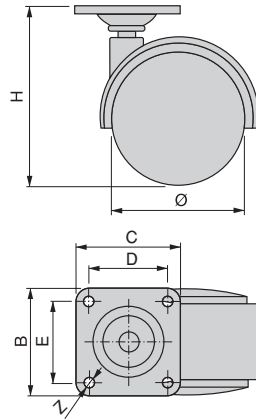
FUNCTIONAL CASTORS // RUOTE FUNZIONALI

Castors for drawer units with plate

Ruote per cassettiere con piastra

Description Descrizioni	Diametre Diametro	Load Portata	CxB	DxE	H	Z	Finishing Finitura	Format Formato	Cod.
without brake senza freno	30	15 Kg	30x30	20x20	44	4,5	Black plastic Plastica nera	400 Ut/UN	3036417
without brake senza freno	40	25 Kg	38x38	25x25	55	5,5	Black plastic Plastica nera	200 Ut/UN	3036617
without brake senza freno	45	25 Kg	38x38	25x25	59	5,5	Black plastic Plastica nera	200 Ut/UN	3036717
without brake senza freno	50	30 Kg	38x38	25x25	65	5,5	Black plastic Plastica nera	200 Ut/UN	3036817
with brake con freno	40	25 Kg	38x38	25x25	55	5,5	Black plastic Plastica nera	200 Ut/UN	3037217
with brake con freno	50	30 Kg	38x38	25x25	65	5,5	Black plastic Plastica nera	200 Ut/UN	3037417

Plastic, Steel
Acciaio, Tecnoplastica

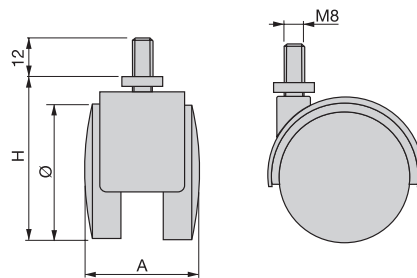


Drawer cabinet castors with bolt

Ruote per cassettiere con bullone

Description Descrizioni	Diametre Diametro	Load Portata	A	H	Finishing Finitura	Format Formato	Cod.
without brake senza freno	40	25 Kg	38	50	Black plastic Plastica nera	200 Ut/UN	3037817

Plastic, Steel
Acciaio, Tecnoplastica



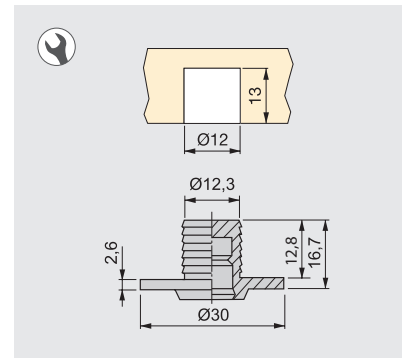
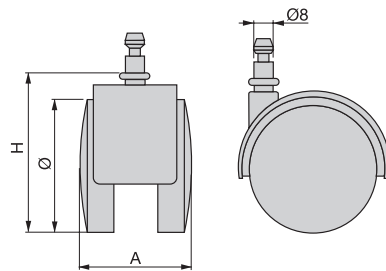
FUNCTIONAL CASTORS // RUOTE FUNZIONALI

Drawer cabinet castors with nut

Ruote per cassettiere con dado

Description Descrizioni	Diametre Diametro	Load Portata	A	H	Finishing Finitura	Format Formato	Cod.
without brake senza freno	50	45 Kg	44	63	Black plastic Plastica nera	200 Ut/UN	3035617

Plastic, Steel
Acciaio, Tecnoplastica

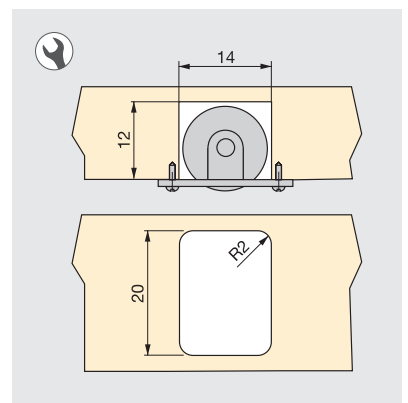
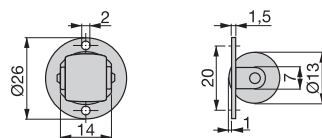


Castors for swivel top

Ruote del coperchio girevole

Finishing Finitura	Format Formato	Cod.
Zinc plated Zincato bianco	1000 Ut/UN	3026105

Plastic, Steel
Acciaio, Tecnoplastica





Emuca S.R.L.

Via Messico, 80 • 35127 Padova (ITALIA)
T. +39 049 8702800 • F. +39 049 87 03019
www.emuca.it • info@emuca.com

Emuca Ltd.

75 Springfield Road • Chelmsford • Essex
CM2 6JG (UK)
T. +44 1268 530 674 • F. +44 1268 282 592
www.emuca.co.uk • sales@emuca.com

Emuca S.A.

Pl. El Oliveral - c/H, 4 • Apartado de correos 176
46394 Riba-Roja del Túria • Valencia (ESPAÑA)
T. +34 96 166 70 19 • F. +34 96 166 71 82
www.emuca.es • emuca@emuca.com

Emuca S.A.R.L.

Parc de l'Aubinière • 2 Avenue des Améthystes
44338 Nantes Cedex 03 (FRANCE)
T. +33 2 49 88 07 35 • F. +33 2 72 22 02 24
www.emuca.fr

Emuca Lda.

AV. da Liberdade n° 38, 4° • 1250-145 Lisboa (PORTUGAL)
T. +351 211 203 940 • F. +34 96 166 71 82
www.emuca.pt

