

BLANCO



MANUAL

Contents

| | |
|---|-----------|
| 1. About this manual | 26 |
| 1.1 Customer service | 26 |
| 1.2 Introduction | 26 |
| 2. Safety | 26 |
| 2.1 General information | 26 |
| 2.2 Proper use | 27 |
| 2.3 Restrictions on the user group | 28 |
| 2.4 Safe use | 28 |
| 3. Avoiding property damage | 29 |
| 4. BLANCO CHOICE LUNE00-S | 30 |
| 4.1 Mixer tap | 30 |
| 4.2 Control unit | 31 |
| 5. Right control element – Tap water | 32 |
| 5.1 Operating the mixer tap | 32 |
| 5.2 Brief overview of the tap water operating element | 33 |
| 5.3 Functions and states of the operating element in detail | 34 |
| 5.4 Power supply in the base cabinet | 36 |
| 6. Left control element – refined water | 37 |
| 6.1 Operating the mixer tap | 37 |
| 6.2 Refined water types (cold) | 38 |
| 6.3 Refined water types (hot) | 39 |
| 6.4 Settings on the scaling wheel to select volume | 41 |
| 6.5 LED colour coded ring (refined water) | 42 |
| 7. BLANCO UNIT App | 43 |
| 8. Cleaning | 44 |
| 9. Spare parts | 44 |
| 10. Disposal/environment | 45 |
| 10.1 Shutting down | 45 |
| 10.2 Disposing of the mixer tap | 45 |
| 11. Conformity | 45 |

1. About this manual

1.1 Customer service

We hope you enjoy using our system.

Our user manual is designed to ensure that you don't have any problems using your BLANCO CHOICE LUNEOO-S mixer tap.

If you happen to have a question, simply get in touch with our BLANCO Customer Service.
You will find contact addresses on the back of this user manual.

You can also send us a message.

You can use the contact form on our website to write to us: **blanco.com**

1.2 Introduction

Dear User

Thank you for choosing the **BLANCO CHOICE LUNEOO-S** mixer tap. This latest-generation mixer tap can dispense filtered, chilled, sparkling and boiling hot water alongside normal tap water.

The mixer tap impresses with its extraordinary design and exclusively electronic operation. The system is powered by a mains adapter and an integrated emergency power supply with batteries for protection in the event of a power failure.

Conventional tap water and the refined water types (still, medium, sparkling and hot water) are dispensed separately at two different points on the mixer tap.

The images and descriptions in this user manual are provided to aid understanding. Your product may differ from the images in some respects.

The installation instructions and set-up conditions can be found in the separate installation instructions. If you want to set up the product at a different location or no longer have the installation instructions available, contact the BLANCO customer service

Contact addresses can be found on the back of this manual.

2. Safety

2.1 General information

Please observe the following instructions.

This user manual is Part 3 of a total of 4 manuals.
You will find the manual number on the cover page of the document.



Please read this manual and other manuals carefully before use to ensure safe usage of the product.

Ensure that you follow the instructions and the work steps in the specified order.

Observe the safety instructions and the installation requirements.

Pay attention to the indicator elements on the components: the LEDs on the mixer tap and the display on the base cabinet unit.

Keep the manuals and product information in a safe place ready to use at a later date or pass on to the subsequent owner.

2.2 Proper use

The mixer tap is designed for use in Germany, Austria, the UK and Ireland.

Use this mixer tap in conjunction with a BLANCO CHOICE base cabinet unit only.

The system has been designed for use in private households, typically in a kitchen environment. However, it can also be used in public places such as an office or a medical practice. However, these types of locations have additional requirements regarding cleaning and maintenance, which the owner is responsible for.

Any operation beyond the intended usage or any other use is considered misuse. BLANCO accepts no liability for any damage caused by misuse.

2.3 Restrictions on the user group

Children aged 8 or over and people with reduced physical, sensory or mental capabilities or lacking in experience and knowledge may only use the mixer tap under supervision or if they undergo a suitable briefing on safe usage and they are aware of the associated risks and hazards. Children must not play with the mixer tap. Children must not carry out cleaning or user maintenance without supervision.

2.4 Safe use



WARNING

Danger posed by magnetic field!

The spray head holder and the spray head itself contain a strong magnet. This magnetic field can prevent a pacemaker from functioning properly!

Individuals with a pacemaker should keep a distance of at least 25 cm.



CAUTION

Risk of burns!

The outlet for hot water and the adjacent components may be very hot. The surface on parts of the mixer tap can also become very hot when hot water is dispensed continuously, especially in the section between the mixer tap body and the spout arm. Touching hot surfaces can cause burns.

Do NOT touch the hot surfaces.

Do NOT touch hot surfaces with your bare hands.

When you need to swivel the outlet, take hold of the part which is coldest: the top end of the outlet.

Leave hot surfaces to cool down.



CAUTION Risk of scalding!

The system automatically releases hot water from the mixer tap during quantity calibration and also during the cleaning programme. The point in time when hot water is discharged is indicated in the manual. The system will also automatically discharge hot water from the mixer tap after an interruption in the power supply or if it is restarted. Hot water coming into contact with skin can cause scalding!

Follow the instructions.

Do not touch hot water and keep your distance.

The dispensed hot water may be very hot or hot water may continue to drip or trickle from the outlet. Hot water coming into contact with skin can cause scalding!

Do not touch hot water and keep your distance.

3. Avoiding property damage

Damage and improper repairs can cause leaks and considerable property damage.

Cables and hoses must be routed in such a way that they cannot be damaged. If you use a waste system, you must pay special attention and ensure that cables and hoses cannot become caught or damaged.

Never put a damaged mixer tap into operation.

Only trained specialists may repair the unit.

Have damaged parts replaced by a professional.

Only original spare parts may be used to repair the unit.

Discolouration may arise if boiling water is allowed to splash onto the same spot on composite kitchen sinks on a constant basis.

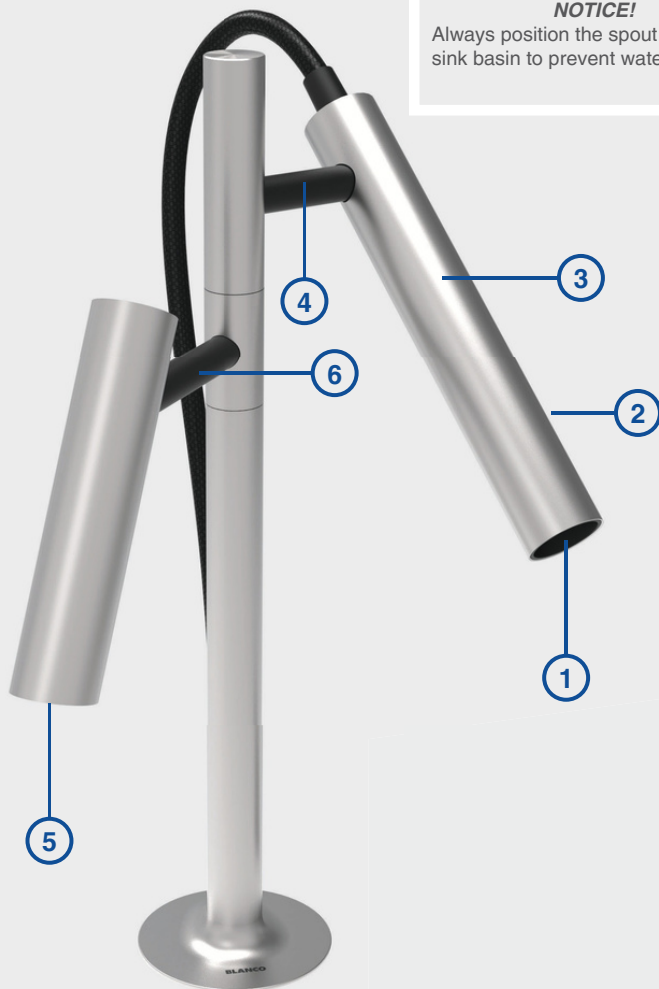
Reduce temperature.

Collect any hot water in a container.

4. BLANCO CHOICE LUNEOO-S

4.1 Mixer tap

NOTICE!
Always position the spout above the sink basin to prevent water damage!

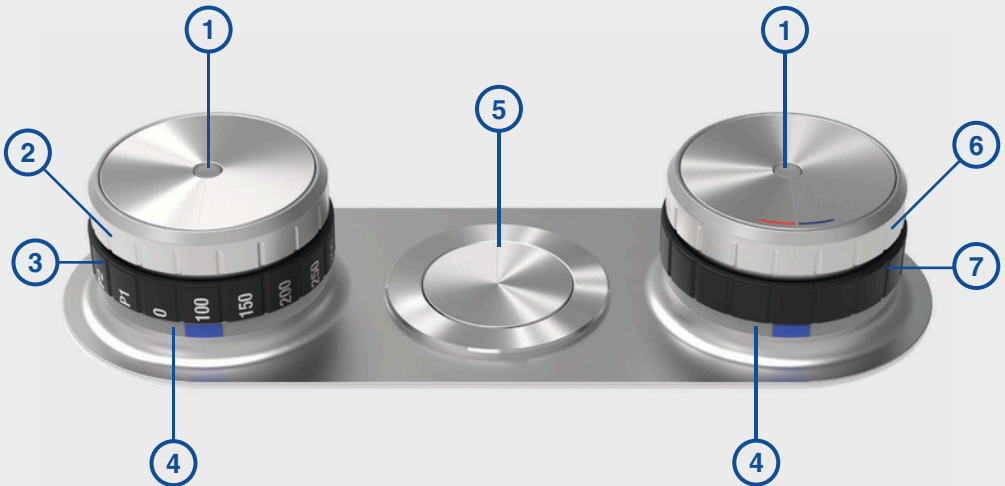


- 1 Outlet tap water
- 2 On the back of the spray head:
Switch button for changing between jet types
- 3 Removable spray head with tap water outlet
- 4 Rotating and swivelling spray head holder
- 5 Outlet refined water types (still/medium/sparkling and hot water)
- 6 Rotatable holder of refined water outlet

4.2 Control unit

Control element for
refined water

Control element for
tap water



- 1 Touch operation actuator (sensor)
- 2 Rotary wheel to select filtered water type
- 3 Rotary scaling wheel to select filtered water volume
- 4 LED colour coded ring
- 5 BLANCO Push-Control drain remote control (optional)
- 6 Rotary wheel for temperature setting (tap water)
- 7 Rotary wheel for flow rate setting (tap water)

5. Right control element – tap water

5.1 Operating the mixer tap



NOTICE!

Do not kink or twist the spray hose! The spray hose is adjustable in length, but cannot be pulled out.

Control the mixed water / tap water (right outlet - spray head) only with the **right** control element.



5.2 Brief overview of the tap water operating element

Press: Quick start

Pressing the upper temperature selector wheel starts the flow of water at a preset volume and temperature. You can customise these pre-settings to suit your needs.

Touch: Cold start & pause

Cold start: A light touch of the touch sensor starts the water flow with cold water at 1/4 of the maximum flow rate – ideal for washing hands.

Pause mode: While the water is running, a touch of the touch sensor switches the mixer tap to pause mode. The last volume and temperature called up is saved for 30 seconds here. It can be restarted by touching the touch sensor again.

Temperature selector wheel

Enables the water temperature to be set – even before the water is turned on.

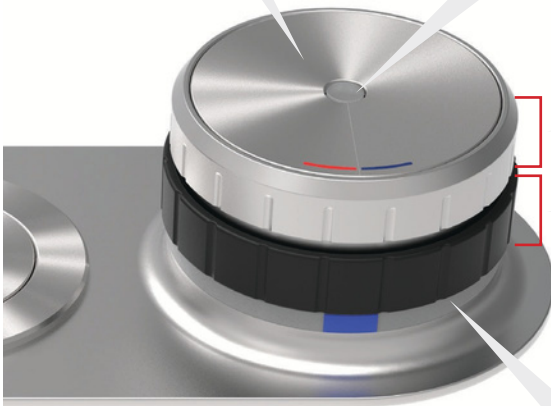
Volume selector wheel

Enables the flow rate to be set.

You can also simply "turn the water on and off" here.

LED indicator

Indicates the current water temperature and provides information on other states, such as deactivation while the cleaning function is active.



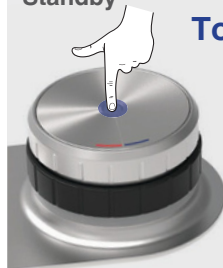
Simple and intuitive:

- First set the temperature (turn at the top).
- Then start the water (turn at the bottom).

More information and detailed functions can be found on the following pages.

5.3 Functions and states of the operating element in detail

Standby



Touch

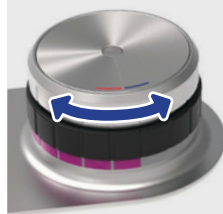
A light touch of the infrared touch sensor starts the flow of water at the spray head with the standard setting. This is always 'cold with a flow rate of 1/4'.

Click



Pressing the upper selector wheel starts the flow of water with a setting saved in advance. This is upon delivery 'cold with a flow rate of 1/4'.

Temperature



Turning the upper selector wheel changes the temperature of the water in seven increments from 'cold' to 'hot'.

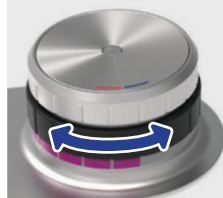
The colour of the circumferential LED indicator changes between blue and red here.

The desired temperature can also be set when the water is not running.

Info:

If no changes are made to the temperature or volume at the operating element for 5 minutes while the water is running, the mixer tap automatically switches to pause mode.

Volume



Turning the lower selector wheel changes the flow rate from 'off' to 'completely open' in eight increments.

The indicator does not change here.

The mixer tap can also be 'opened/closed' by turning the flow rate selector wheel. You can therefore use this to switch off the flow of water completely or start the flow of water.

When the mixer tap is in pause mode, turning the flow rate selector wheel reactivates the previous setting.

Pause



When the water is running, a light touch of the infrared touch sensor stops the flow of water. The front LED lights up in the colour of the last set temperature. The mixer tap is now in pause mode for 30 seconds.

The last setting used (temperature and flow rate) can be started again by lightly touching the infrared touch sensor again.

After the 30 seconds have elapsed, the LED goes out and the mixer tap switches to standby mode.

Saving the setting



If the water is running and you press the upper wheel for longer than 2 seconds, the current setting (temperature and flow rate) is saved. The ring flashes white twice to signal confirmation.

In future, the mixer tap will start from standby with this saved setting when you briefly press the upper selector wheel once.

Energy supply malfunction



If the front LED flashes red, there is a problem with the energy supply and all functions are deactivated (see next page).

Cleaning



If you press and hold the upper selector wheel for longer than 5 seconds in standby mode, the mixer tap switches to the cleaning function. The front LED then lights up yellow.

The operating element is deactivated for 30 seconds while the cleaning function is active. Turning/pressing the selector wheels or touching the touch sensor will not make water flow out. After the 30 seconds have elapsed, the mixer tap switches back to standby mode.

The cleaning function can be switched off by pressing the upper selector wheel again for 5 seconds.

NOTICE!

Activating cleaning mode affects the output of mixed water only! If you wish to deactivate both water types so that you can clean, you also need to switch the left-hand operating element to cleaning mode (set scaling wheel to 0).

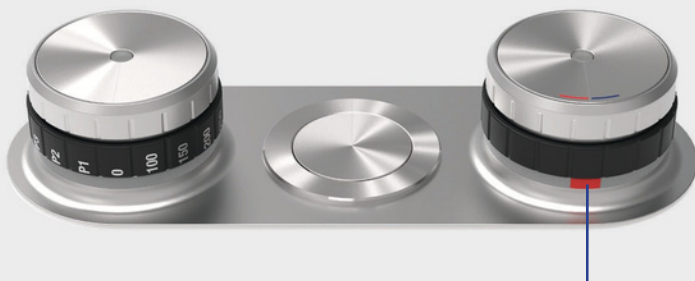
5.4. Power supply in the base cabinet

The power supply consists of a mains adapter and an emergency power supply with batteries, which ensures that the flow of water is stopped in the event of a power failure.

NOTICE!

In order for the mixer tap to function properly, both the mains adapter and the batteries in the battery box must have a sufficient supply of energy!

If one of the two energy sources (mains adapter or battery box) fails as an energy supplier, the mixer tap will indicate this with a flashing red LED. The mixer tap can then no longer be operated. In this case, please check both the functioning of the mains adapter and the energy level of the batteries. Replace the batteries if necessary.



Indicator LED flashes red: Energy supply malfunction

Six batteries of type AA/LR6 are required.



6. Left control element – refined water

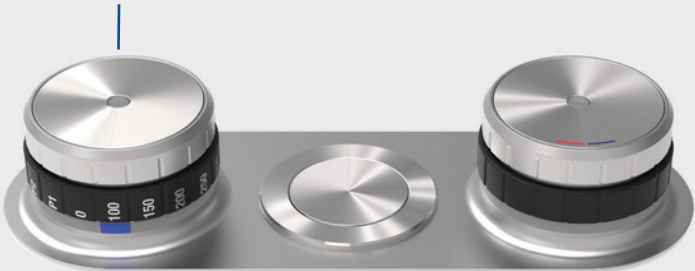
6.1 Operating the mixer tap



NOTICE!

Always position the spout above the sink basin to prevent water damage!

Control refined water
(left outlet) only with the
left control element.



6.2 Refined water types (cold)

NOTICE! Depending on the base cabinet unit chosen, not all water types (colours) may be available on the mixer tap!

Cold



Turn the upper rotary wheel on the left control unit to select cold water type

Blue



1 sec



Sparkling water

Turquoise



1 sec



Medium sparkling water

Green



1 sec



Still water



Use the touch sensor on the left control unit to activate water dispensing.



You can stop the water flow at any time using the left sensor.

The system purges with still water briefly at the end or if dispensing of sparkling water is interrupted.

6.3 Refined water types (hot)

NOTICE! Depending on the base cabinet unit chosen, not all water types (colours) may be available on the mixer tap!



CAUTION Risk of scalding!

The dispensed hot water may be very hot or hot water may continue to drip or trickle from the outlet. Hot water coming into contact with skin can cause scalding!

Do not touch hot water and keep your distance.

Hot



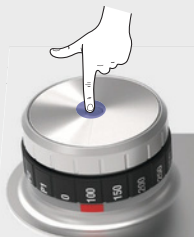
Press the upper rotary wheel on the left control unit and turn twice to select hot water



1 sec



Use the touch sensor on the left control unit to activate hot water dispensing function.





Hot water can be dispensed for 10 seconds after activating hot water mode by pressing and turning two notches. The system then switches back to the previously selected water type (cold).

You can stop the water flow at any time using the touch sensor on the left control unit.

CAUTION Risk of burns!

The outlet for hot water and the adjacent components may be very hot. The surface on parts of the mixer tap can also become very hot when hot water is dispensed continuously, especially in the section between the mixer tap body and the spout arm. Touching hot surfaces can cause burns!

Do NOT touch the hot surfaces.

Do NOT touch hot surfaces with your bare hands.

When you need to swivel the outlet, take hold of the part which is coldest: the top end of the outlet.

Leave hot surfaces to cool down.

6.4 Settings on the scaling wheel to select volume



Selection of water quantity



You can optimise the dispensing quantities using your base cabinet unit calibration function. Please refer to the user manual for your base cabinet unit for more information.

Even after full optimisation, the dispensing quantities, especially for hot water, may vary to a certain extent. This is due to technical reasons.



Left control unit is off.



If the scaling wheel is set to '0' the left control unit is deactivated and it is not possible to dispense refined water, but the base cabinet unit continues to heat and cool.

You can use this setting to clean the mixer tap to prevent accidental water discharge.

NOTICE! Switching off the left-hand operating element affects the output of refined water only! If you wish to deactivate both water types so that you can clean, you also need to switch the right-hand operating element to cleaning mode (press top wheel and hold down for 5 seconds).



P1 to P4

You can use the BLANCO UNIT app to indicate a specific water quantity and type for each position on the rotary scaling wheel (P1 to P4). You can then use the sensor to start dispensing water.

If the water type is set to 'Hot water' in the BLANCO UNIT app, you must unlock the safety mechanism (by simultaneously pressing and turning past two notches) before dispensing water.

For more information on the BLANCO UNIT app see page 43.



6.5 LED colour coded ring (refined water)



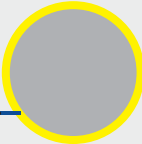
The remaining filter service life or remaining CO₂ capacity has reached a level of less than 10%. As a result, you will soon need to replace the CO₂ cylinder or clean and change the filter (see display on the base cabinet unit).



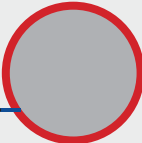
The remaining filter service life or remaining CO₂ capacity has come to an end. As a result, you now need to replace the CO₂ cylinder or clean and change the filter (see display on the base cabinet unit).



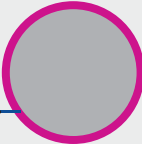
Cleaning programme is running.



Cleaning programme is running. User action required (see display on the base cabinet unit).



System fault/'Error' (see display on the base cabinet unit).



System is in menu mode (see display on the base cabinet unit).



Initialisation is running (see display on the base cabinet unit).

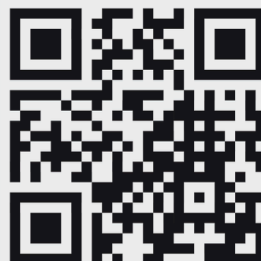
7. BLANCO UNIT App

Using the BLANCO UNIT app

The BLANCO UNIT app enables connection to compatible BLANCO products, providing you with additional features such as support for operation, maintenance, and care. You can easily contact BLANCO Service directly via the BLANCO UNIT app.

The BLANCO UNIT app allows you to control the system even more effectively and provides you with other setting options, such as:

- Customised settings for quantities and water types
- Ordering consumables directly on your mobile device
- Hot water block to switch off the hot water function
- Error messages and notifications directly on your mobile device in real time
- Carrying out cleaning and filter changes assisted by graphics directly on your mobile device
- and much more...!



The software is available from the iOS App Store and Android Store.



You will find further information on using the app in the description of the BLANCO UNIT app.

Google Play and the Google Play logo are Google LLC trademarks; Apple and the Apple logo are Apple Inc. trademarks, both registered in the United States and other countries.

8. Cleaning

You can wipe the outside of the control box and the and the battery box in the base cabinet with a damp cloth, but not the plugged in power plug! Make sure that no water enters the system and that the power supply connection terminals do not get wet.

Do not use any abrasive or chlorine-based cleaning agents to clean the surfaces. It is recommended to use the cleaning agents indicated by BLANCO to clean the mixer tap. You can order these conveniently from the BLANCO Shop online.



blanco.com/care-luneoo

In order to avoid unwanted water dispense during cleaning, the mixer tap has a cleaning function that deactivates the sensors.

See page 35 (tap water)

See page 41 (refined water)

9. Spare parts

Enter your model code to find spare parts in the BLANCO Shop at blanco.com. You will find the code on the cold water hose.

If you happen to have a question, simply get in touch with our BLANCO Customer Service.

You will find contact addresses on the back of this manual.



blanco.com/shop-luneoo

10. Disposal/environment

10.1 Shutting down

The shutdown process is described in the installation instructions.
See Section 5 'Shutting down' in manual no. 1.

Always have such work handled by trained specialists!



10.2 Disposing of the mixer tap

You are legally obliged to avoid generating waste and protect your health and the environment:

Return the product to a collection point. Do NOT dispose of the product in general household waste.

Dealers will take the mixer tap back free of charge.



11. Conformity

The system complies with the requirements specified in the applicable directives and guidelines.

You can request a declaration of conformity from BLANCO.

6.5 Indicatore LED anulare



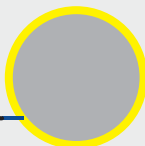
La durata residua del filtro o la capacità residua di CO₂ hanno raggiunto un valore minore del 10 %. Ciò significa che la sostituzione del cilindro di CO₂ o la pulizia con sostituzione del filtro è imminente (vedere il display dell'unità sottolavello).



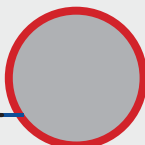
La durata residua del filtro o la capacità residua di CO₂ hanno raggiunto il valore zero. Ciò significa che la sostituzione del cilindro di CO₂ o la pulizia con sostituzione del filtro è indispensabile (vedere il display dell'unità sottolavello).



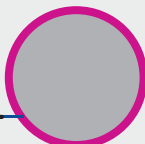
Il programma di pulizia è in fase di esecuzione.



Il programma di pulizia è in fase di esecuzione; è necessario l'intervento dell'utente (vedere il display dell'unità sottolavello).



Guasto di sistema / Errore / Error
(vedere il display dell'unità sottolavello).



Il sistema è in modalità menu
(vedere il display dell'unità sottolavello).



Inizializzazione in corso
(vedere il display dell'unità sottolavello).

7. App BLANCO UNIT

Avvisi sull'uso dell'app BLANCO UNIT

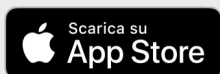
L'app BLANCO UNIT consente la connessione ai prodotti BLANCO compatibili, offrendoti funzionalità aggiuntive come supporto per l'utilizzo, la manutenzione e la cura. Tramite l'app BLANCO UNIT puoi contattare direttamente e facilmente il servizio di assistenza BLANCO.

L'app BLANCO UNIT consente di controllare il sistema ancora meglio e offre ulteriori possibilità di impostazione, ad esempio:

- Impostazioni personalizzate della quantità e dei tipi di acqua
- Ordinazione di materiali di consumo direttamente dal dispositivo mobile
- Bloccaggio dell'acqua calda, per disattivare la funzione di acqua calda
- Messaggi di errore e avvisi in tempo reale direttamente sul dispositivo mobile
- Esecuzione della pulizia e della sostituzione del filtro con supporto grafico direttamente sul dispositivo mobile
- E molto altro!



Il software è disponibile nell'iOS App Store e nell'Android Store.



Per gli ulteriori avvisi sull'uso dell'app vedere la descrizione dell'app BLANCO UNIT stessa.

Google Play e il logo Google Play sono marchi di Google LLC; Apple e il logo Apple sono marchi di Apple Inc., entrambi registrati negli USA e in altri paesi.